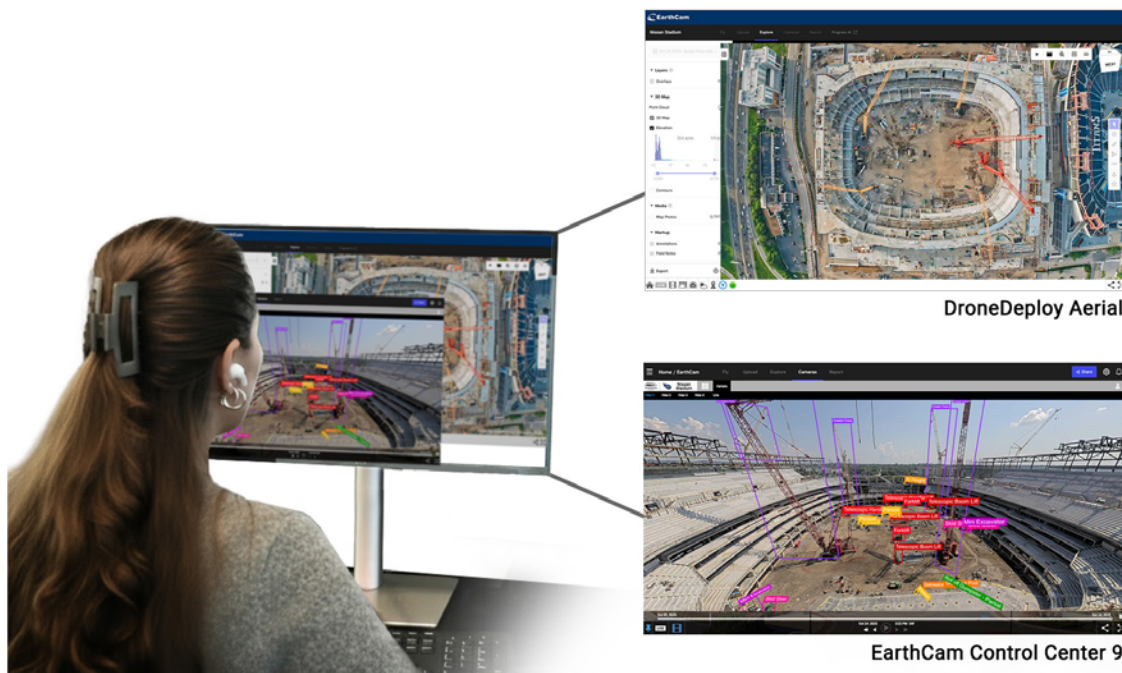


EarthCam and DroneDeploy Announce Unified Live Reality Capture Integration for Construction Projects

By Erika Fredricks, November 3, 2025



EarthCam, the leading provider of construction camera technology and services, and DroneDeploy, the leading reality capture platform, today announced a new integration between [EarthCam's Control Center SaaS](#) and [DroneDeploy's unified reality capture platform](#). This integration delivers the most comprehensive view of construction sites available, combining live-streaming video, gigapixel time-lapse archives, orthomosaic maps, and 360° site documentation into one centralized interface. With EarthCam's AI-powered analytics layered into this data, users gain automated insights into progress, assets, and equipment across their projects.

"By combining DroneDeploy's imagery with EarthCam's live content, users gain a valuable, multi-perspective view of their jobsite productivity," said Brian Cury, CEO and founder of EarthCam. "This unified perspective ensures every event is captured, from detailed archived aerial photos to live views, for continuous progress monitoring, safety and security."

"The integration is about connecting the dots between what's captured in the air and what's happening on the ground. It's helped improve coordination and accountability across our teams," said Grant Barton, CM-BIM VDC Engineer at the Tennessee Builders Alliance, constructing the [new stadium for the Tennessee Titans](#).

The use of aerial and ground imagery allows users to consolidate views into a single pane of glass, accessible from either EarthCam's Control Center or DroneDeploy Aerial. The two-way data flow enables automatic synchronization and real-time updates, providing a comprehensive view of construction site activities in real time.

"Our customers want all their data in one place," said Mike Winn, CEO and co-founder of DroneDeploy. "Combining visual data from fixed cameras with drone and handheld camera imagery democratizes data across the workforce, enabling better decision making on all their projects. The integration of EarthCam's imagery expands our platform's existing air and ground viewports, delivering the most complete reality capture experience available."

Main benefits of the integration include:

- **Data sharing:** DroneDeploy's aerial data synchronizes to EarthCam's Control Center 9 in real time for seamless documentation, earlier issue detection and higher confidence in decision making.
- **Comprehensive, real-time visibility:** View EarthCam's live streams, panoramas, and time-lapse imagery within DroneDeploy, while DroneDeploy's orthomosaics and 360° captures appear inside EarthCam's Control Center 9, delivering a complete, two-way view of every project.
- **Streamlined Deployment:** A simple setup process enables teams to quickly combine aerial and live ground-level visual data across both systems, minimizing configuration time and improving efficiencies in tracking and reporting.

The new EarthCam-DroneDeploy integration is live and available today to customers of both companies. Construction firms, contractors, infrastructure developers, and A/E/C professionals already using EarthCam or DroneDeploy products and services can begin leveraging the integration today to unify their aerial and ground based visual data into one powerful, real-time project view.

To learn more visit www.earthcam.net/dronedeploy.