

MLK Memorial in DC will take shape live on Webcam June 5, 2010

WASHINGTON (AP) - The memorial slated for the National Mall in Washington honoring Martin Luther King Jr. will slowly take shape in view of anyone in the world.

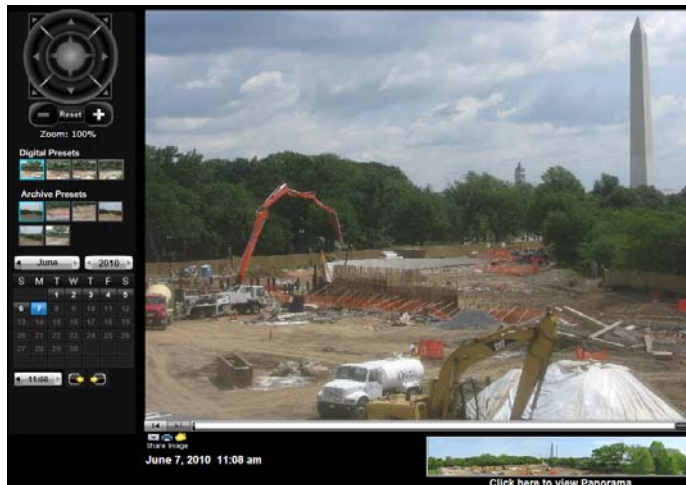
The group building the memorial launched an "MLK Construction Cam" online this week to show progress on the \$120 million project.

So far, a large plot of land along the Tidal Basin has been cleared. It will take months to drive 340 concrete piles into the ground to support the granite memorial plaza and a towering statue of King.

The 28-foot central sculptures will arrive in pieces from China, where they were created. Sculptor Lei Yixin is scheduled to assemble the pieces this fall.

Organizers aim to complete the project in 2011. They have raised \$107 million of the \$120 million needed for the memorial.

MLK Construction Cam: <http://www.mlkmemorial.org/earthcam>



Article also available in:

wtop