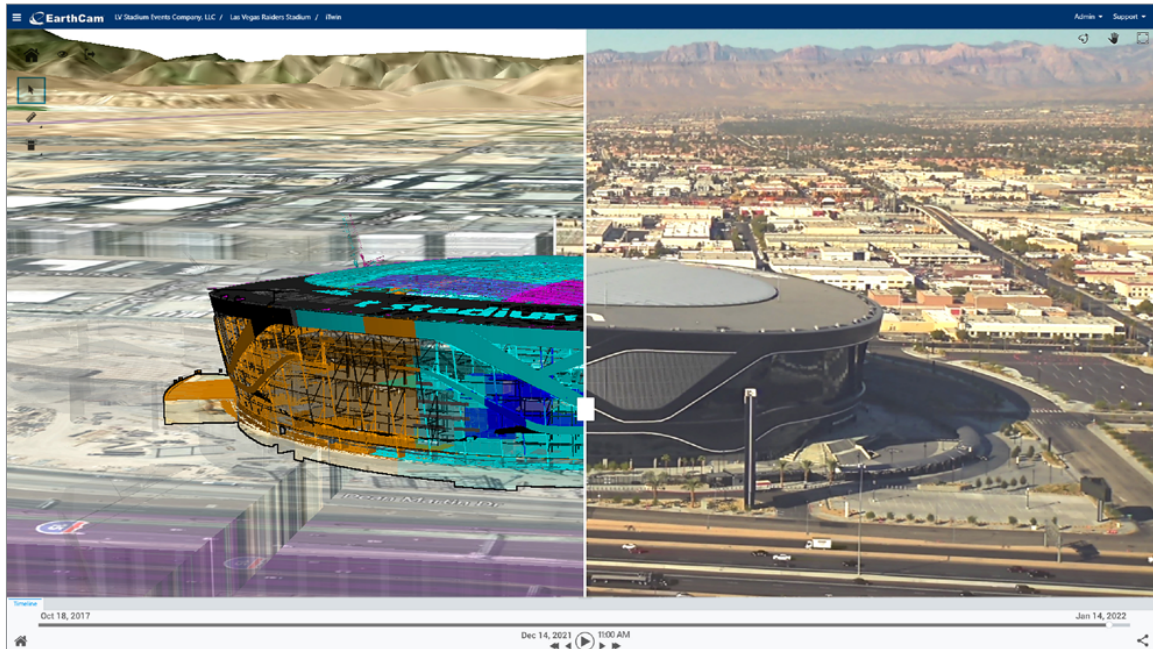


EarthCam 4D revives building digital twins

January 27, 2022



EarthCam, a provider of webcam technology and services, introduced January 26, 2022 [EarthCam 4D](#), which allows virtual design and construction (VDC) teams to overlay and synchronize live images with their digital twins. The intuitive timeline allows users to move back and forth in time and view live images relative to their 4D models.

EarthCam 4D is built on the Bentley iTwin platform and extends Bentley Systems' Synchro 4D models with high-resolution photos from multiple cameras across the site that overlap in precise alignment. Viewers can zoom in and out, and related live images stay in sync. The model's unique transparency / opacity and color adjustments allow for new and powerful ways to compare and compare models over time.

EarthCam 4D is the first solution to fully synchronize time-lapse images with 4D scheduling models – stakeholders no longer need multiple software interfaces and various stored image sources to access this important comparison information. According to the FMI, 13% of working time is spent searching for project data and information. Real-time image synchronization with the Synchro 4D model in a single interface provides instant real-time tracking of each steel beam and window installation versus 4D models, making it easy for Synchro users worldwide to manage a project.

EarthCam 4D was premiered on January 26 at [Bentley MOMENTUM](#), přehlídce vývojářských řešení pro digitální dvojčata. More information about EarthCam 4D can be found on the web earthcam.net/earthcam4d.